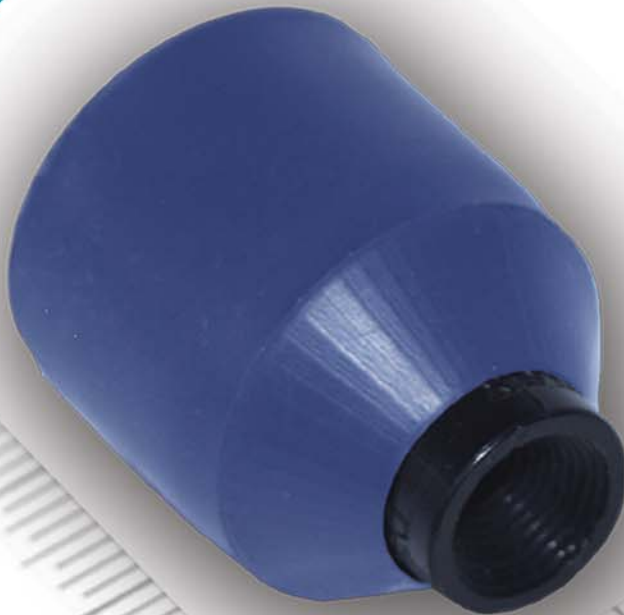


# EEOS™

## INDUSTRIAL VIDEO CAMERA

### Key Features

- Compact design
- NTSC Color Video Camera
- Extreme Impact Resistance
- Variety of mounting methods
- Customized Color Option



The Color Video Camera CLR01 is an NTSC composite video output device for commercial and industrial applications. Applications for viewing a remote area not in a direct line of sight, hazardous, and/or unsafe. Typical applications might be rearview backing camera (s) for heavy trucks and equipment, process control viewing, safety controls, security monitoring in harsh environments, and spotting views for cranes and heavy equipment. This camera will interface directly to VCR, Closed circuit TV, or Monitor with video terminations at 75 Ohms.

**EEOS Corporation**  
3575 S. West Temple, #5  
Salt Lake City, Utah 84115

Phone: 801.261.2881  
Fax: 801.261.1095  
Patent Pending

**EEOSinc.com**

Copyright 2004, EEOS Corporation, All rights reserved  
CLR01 Shown with custom blue coating.

## SPECIFICATIONS:

- Power Requirements: 9 to 14.5Vdc
- Power Consumption: 20mA
- Power Dissipation: .5 watt maximum
- Recommended Temperature: 14 to 105 F (-10 to 40 C)  
Extreme 0 to 185 F (-18 to 85C)
- Humidity: 0 to 90% Non-Condensing

## PHYSICAL CHARACTERISTICS:

- Weight: 1.1 oz., 34 grams (Standard Case)
- Dimensions:  
Diameter: 1.15" (30mm) Standard Case  
Length: 1.83" (47mm) Standard Case
- Color: Standard Black
- Case: Metal/Plastic Composition

## ENVIRONMENTAL CHARACTERISTICS:

- Chemical Resistant
- Oil Resistant
- Water Resistant to CFR46 part 110.20,  
NEMA 4 (1 hour @ 6 feet)
- Shock Resistance to 10G Impact (Flat Surface,  
Multi-Strike)

## VIDEO OUTPUT:

- Sync: NTSC
- Pixel Format: 510 x 492
- Imager: Color
- Connection: Moisture Resistant 6 pin 1/4 Turn  
Twist-Lock with Gold Plate Female Contacts
- Signal Load: 75 Ohm

## VIDEO FEATURES:

- Technology: CMOS
- Diagonal Field of View: 55 °
- Automatic Controls:  
Gain  
White Balance  
Exposure

## FIXED CONTROLS:

- Focal Length 6MM Infinite Focus
- Image Output Origin: (mirror, Flip)  
Lens: F 2.8  
IR/UV Cut Filters  
Illumination Sensitivity: 2.0Lux

Patent Pending

## OPTIONS:

Optional Case Color (Special Order Only)  
Optional Case Configuration (Special Order Only)



Distributed By:

## ACCESSORIES:

- Mounting Bracket: "L" Mount or Clamp Style
- Standard Cable Adapter Kit:  
75 Ohm BNC Female Video 18"  
Coax Extension w/9Vdc Power Adapter to 115Vac
- 75 Ohm RCA Female Video 18" Coax w/9Vdc Power  
Adapter to 115Vac



\* Preliminary Test Results.  
Results May Vary With Specific Applications.