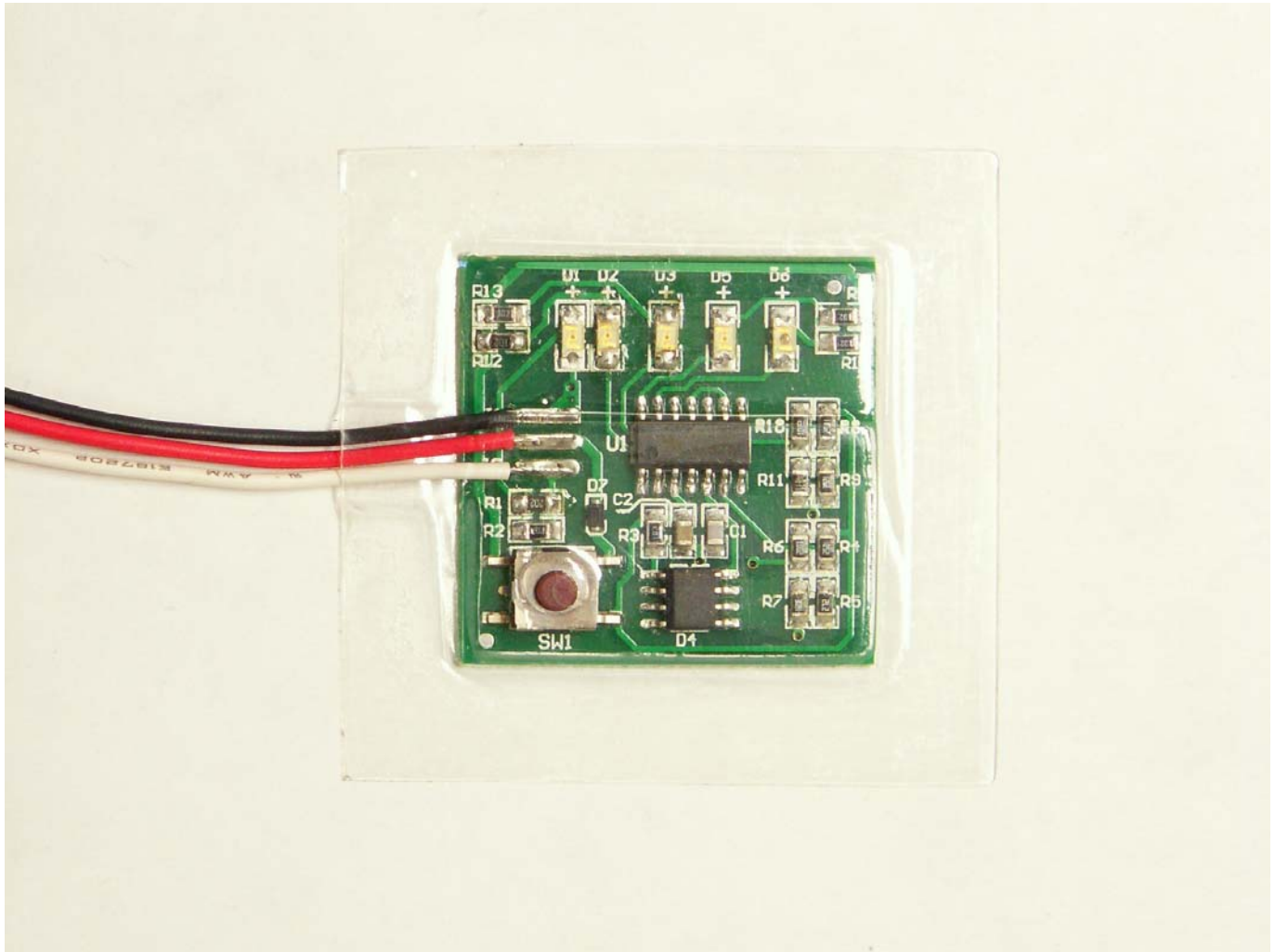


# Battery Buddie

## 12VLA-STD



### General Description:

The Battery Buddie is a Compact, Moisture Resistant, Basic Voltage Testing Appliance that attaches directly to the device under observation. The Model 12VLA is manufacturer configured for 12 volt lead acid type batteries and their characteristics. The 12VLA does not require any current until activated by the Test Switch. This is to avoid discharging batteries in a storage or standby situation. The 12VLA uses Colored LED array to indicate four conditions. Those conditions of interest are as follows. 1-Green is Good/Ready for Use. 2- Yellow is two steps of a Discharged Condition. 3- Red is battery Too Low to use—Recharge. 4- No Color—the Battery Is Dead/Very Weak—Needs Service Attention.

### General Purposes:

The general purposes of this device would be; environments where battery Knowledge is Limited, Speed and Convenience are required, and Testing Tools are not available. Typical applications for Battery Buddie would be Alarm Systems, Emergency Lighting Devices, Motor Vehicle Fleets, Boats and Recreational Use Vehicles with 12Vdc Battery Systems.

### Specifications:

Power Requirements: 5 to 15Vdc  
Power Consumption: 65mA maximum (Active State)  
Power Dissipation: 0.78 watt maximum  
Operating Temperature: Normal -5 to 176° F (-21 to 80°C)  
Humidity: 0 to 90% Non-Condensing

# Battery Buddie 12VLA-STD



## Physical Characteristics:

Weight: 1.0 oz., 28.3 grams

### Dimensions:

Width: 2.00" (51mm)

Length: 2.00" (51mm)

Color: Standard Green

Case: Clear Plastic Composition

## \*Environmental Characteristics:

Chemical Resistant, Oil Resistant, Water Splash Resistant

## Color Output:

Green1: +Charge Voltage Present

Green2: +12.9Vdc or higher

Yellow1: +11.3Vdc or higher

Yellow2: +9.8Vdc or higher

Red: +8.2Vdc or higher

\*Measurements Accurate to  $\pm 2\%$

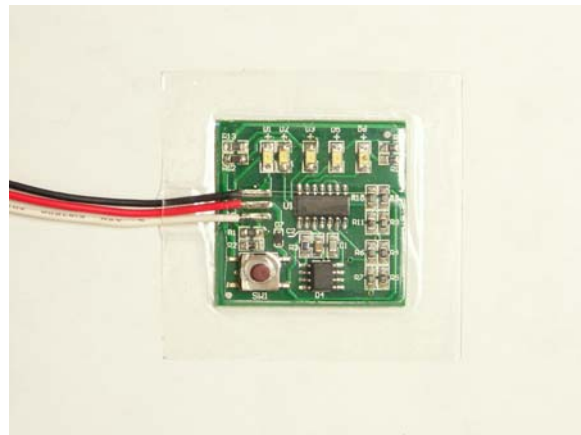
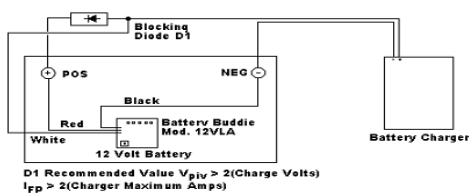
## Attachment:

Rubberized Tape Backing

18" (50cm) Lead Wires 24 AWG Multi-Strand (Red, Black, Optional White)

## Accessories:

Optional Charger "On" Circuit with provided Green LED Indicator--D1 requires customer provided external Blocking Diode of a forward current handling value greater than the charger current.  
See Typical Application Diagram Below.



Gibson Engineering & Computers, Inc.  
3575 S. West Temple, #6  
Salt Lake City, Utah 84115  
Phone: 801.261.8181  
Fax: 801.261.1095  
Web: [www.GibsonEng.com](http://www.GibsonEng.com)

Available From:

\* Test Results May Vary With Specific Applications.  
Last Revised 07/12/2021